

# 6 ways

to get the best satellite service  
for your smart device

When you're traveling or working away from home, you can't always rely on cellular networks to keep your smartphone or tablet connected. In many parts of the world, satellite connectivity is the only option. But not all satellite services can deliver the same quality. Find out which of the major satellite communications providers can give reliable smart device connectivity for calls, SMS, internet and app use, no matter where you go.

## THE SERVICES

## MEET THE CONTENDERS

### Service:

Provider:

Terminal:

Manufacturer:



### IsatHub

Inmarsat

Wideye iSavi

AddValue



### Iridium Go!

Iridium

Iridium Go!

Iridium



### Thuraya SatSleeve

Thuraya

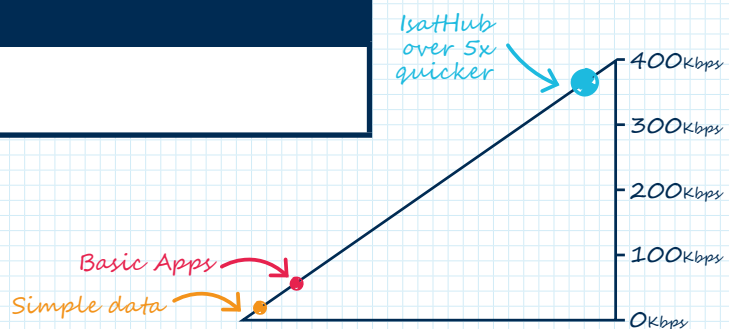
SatSleeve

Thuraya

## TEST 01

## SPEED

IsatHub	384 Kbps	✓
Iridium Go!	384 Kbps	✗
Thuraya SatSleeve	384 Kbps	✗



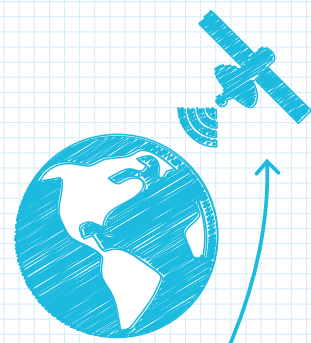
IsatHub is a broadband connectivity solution, so you can browse the web and use any of your apps. IsatHub lets you send files, emails and photos quickly and easily, perfect for remote working wherever you are.

## TEST 02

## GLOBAL NETWORK

IsatHub		
Global	✓	
Iridium Go!		
Global	✓	
Thuraya SatSleeve		
Regional		✗
No Coverage in North or South America. Good coverage elsewhere		

Inmarsat's global 3G satellite network operates over four satellites, carefully positioned to offer worldwide coverage. And because the satellites are geostationary, you don't need to worry about loss of signal from satellite handovers. You'll receive a stable, reliable service whenever you connect.

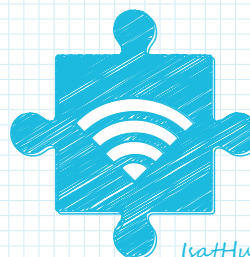


Inmarsat's network has 99.9% availability across its satellite and ground network

### TEST 03

## DEVICE COMPATIBILITY

IsatHub	Iridium Go!	Thuraya SatSleeve
Any Wifi compatible devices ✓	iOS and Android devices ✗	Specific device only ✓



IsatHub is compatible with all Wifi devices

### TEST 04

## APP USAGE

IsatHub	Iridium Go!	Thuraya SatSleeve
Any ✓	Specific ✗	Any ✓



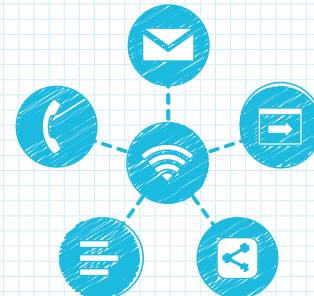
Use all of your Apps   

With Inmarsat's 3G IP-based connectivity you can use any app that you have on your device, which means you're not limited to only a small selection of available apps which may be the case with other providers, where each app may need to be specifically developed to work on their system.

### TEST 05

## MULTIPLE USERS

IsatHub	Iridium Go!	Thuraya SatSleeve
5 simultaneous users ✓	Only one data/voice connection at a time ✗	Only one device connection possible ✓



IsatHub can comfortably support four users accessing data at the same time, as well as somebody using the dedicated voice line. Iridium and Thuraya's service both only support one data or voice connection at a time.

### RESULTS

## CONCLUSION

If you're looking to use your smartphone or tablet wherever you travel, and enjoy the same level of voice, SMS and data access that you would at home or at the office, then IsatHub, powered by **Inmarsat's award-winning global 3G satellite network**, is the service for you.

Find out more go to  
[inmarsat.com/isathub](http://inmarsat.com/isathub)



**IsatHub**  
Smart connectivity anywhere